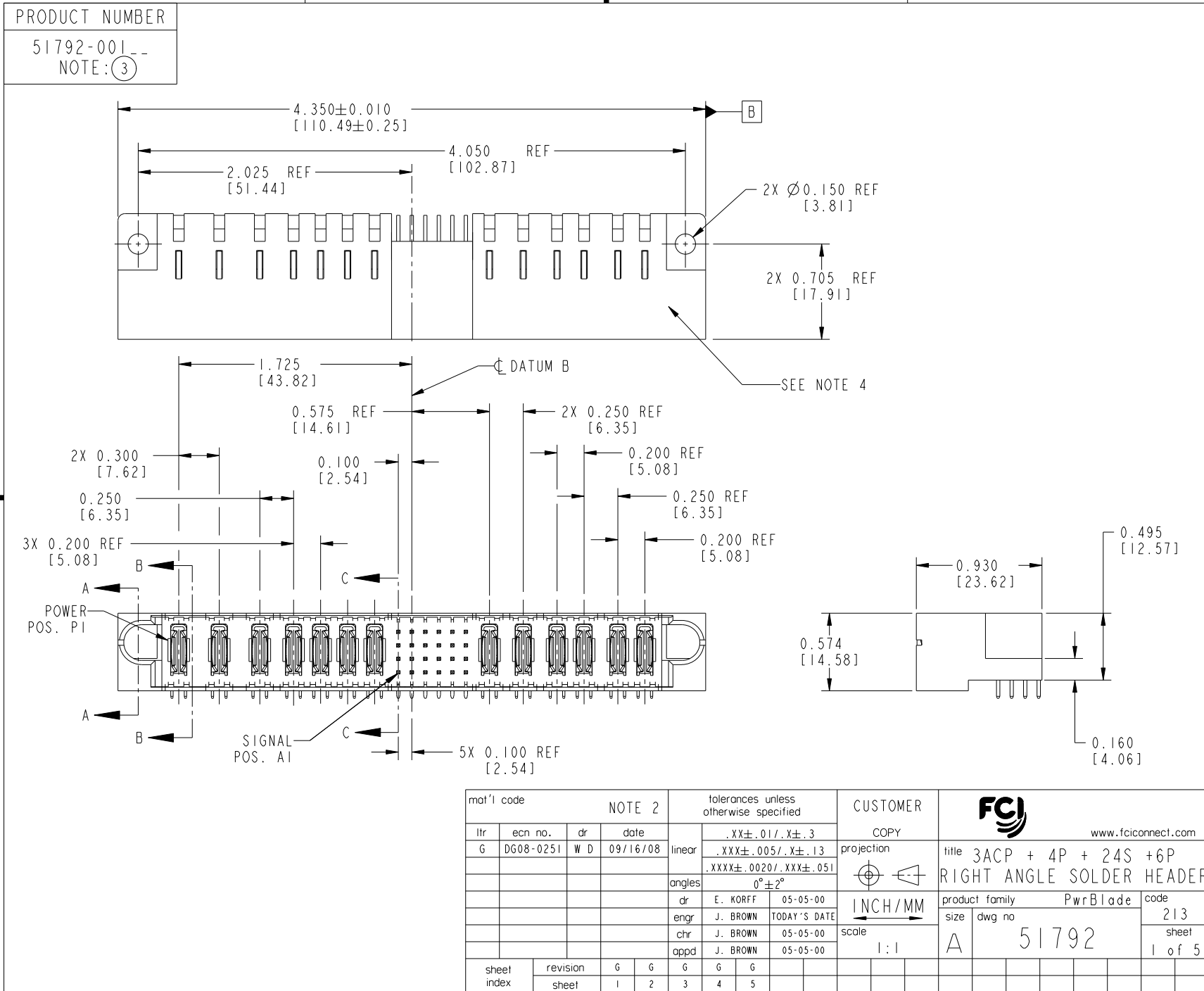


Tous droits strictement réservés. Reproduction ou communication a des tiers interdite sous quelque forme que ce soit sans autorisation écrite du propriétaire. Propriété de c FCI. Droits de reproduction FCI.



All rights strictly reserved. Reproduction or issue to third parties in any form whatever is not permitted without written authority from the proprietor. Property of FCI. Copyright FCI.



| | | | | | | | | | |
|-------------|----------------|--------|----------|---------------------------------------|-----------------------|------------|--|----------------------------------|--|
| mat'l code | | NOTE 2 | | tolerances unless otherwise specified | | CUSTOMER | | FCI | |
| lir | ecn no. | dr | date | linear | .XX±.01/.X±.3 | COPY | | www.fciconnect.com | |
| G | DG08-0251 | W D | 09/16/08 | angles | .XXX±.005/.X±.13 | projection | | title 3ACP + 4P + 24S + 6P | |
| | | | | | .XXX±.0020/.XXX±.051 | INCH/MM | | RIGHT ANGLE SOLDER HEADER | |
| | | | | dr | 0°±2° | scale | | product family PwrBlade code 213 | |
| | | | | enrg | E. KORFF 05-05-00 | 1:1 | | size A 51792 sheet 1 of 5 | |
| | | | | chr | J. BROWN TODAY'S DATE | | | | |
| | | | | appd | J. BROWN 05-05-00 | | | | |
| sheet index | revision sheet | G 1 | G 2 | G 3 | G 4 | G 5 | | | |

Pro/E

PDM: Rev:G

STATUS: Released

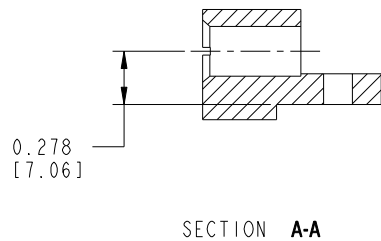
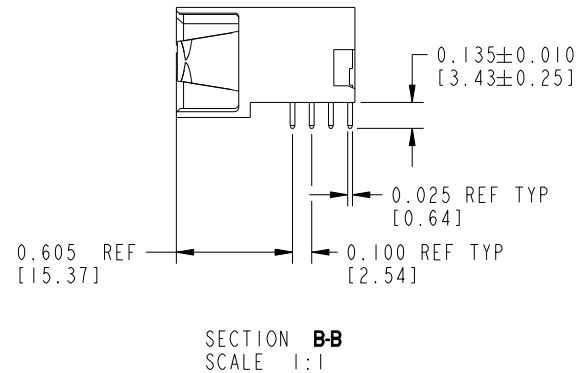
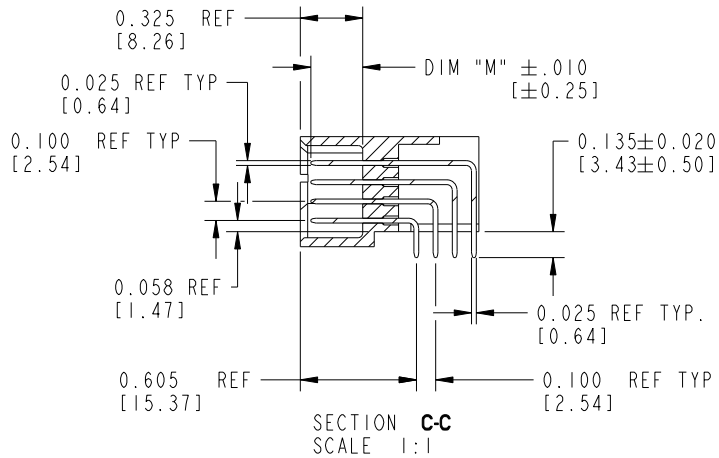
Printed: Sep 21, 2008

Tous droits strictement réservés. Reproduction ou communication a des tiers interdite sous quelque forme que ce soit sans autorisation écrite du propriétaire. Propriété de c FCI. Droits de reproduction FCI.

All rights strictly reserved. Reproduction or issue to third parties in any form whatever is not permitted without written authority from the proprietor. Property of FCI. Copyright FCI.



PRODUCT NUMBER
51792-001--
NOTE: (3)



| | | | | | | | | | |
|-------------|----------------|--------|------|---------------------------------------|-----------------------|-------------|--|----------------------------------|--|
| mat'l code | | NOTE 2 | | tolerances unless otherwise specified | | CUSTOMER | | www.fciconnect.com | |
| lfr | ecn no. | dr | date | linear | .XX±.01/.X±.3 | COPY | | title 3ACP + 4P + 24S + 6P | |
| G | | | | | .XXX±.005/.X±.13 | projection | | RIGHT ANGLE SOLDER HEADER | |
| | | | | angles | .XXX±.0020/.XXX±.051 | INCH/MM | | product family PwrBlade code 213 | |
| | | | | dr | 0°±2° | scale | | size dwg no 51792 sheet 2 of 5 | |
| | | | | engr | E. KORFF 05-05-00 | 1:1 | | | |
| | | | | chr | J. BROWN TODAY'S DATE | | | | |
| | | | | appd | J. BROWN 05-05-00 | | | | |
| sheet index | revision sheet | | | | | | | | |

Pro/E

PDM: Rev:G

STATUS: Released

Printed: Sep 21, 2008

cage code 28526

Tous droits strictement réservés. Reproduction ou communication a des tiers interdite sous quelque forme que ce soit sans autorisation écrite du propriétaire. Propriété de c FCI. Droits de reproduction FCI.



All rights strictly reserved. Reproduction or issue to third parties in any form whatever is not permitted without written authority from the proprietor. Property of FCI. Copyright FCI.

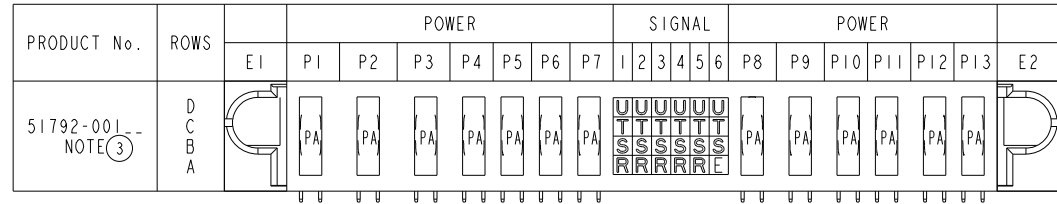
1 | 2

3 |

4

PRODUCT NUMBER
51792-001--
NOTE: (3)

| CODE | DIM "M" MATING LENGTH | | CONTACT TYPE |
|------|-----------------------------|--------|-----------------|
| PA | N/A | [N/A] | POWER |
| R | 0.270 | [6.86] | SIGNAL |
| S | 0.270 | [6.86] | SIGNAL |
| T | 0.270 | [6.86] | SIGNAL |
| U | 0.270 | [6.86] | SIGNAL |
| E | 0.220 | [5.59] | SIGNAL |



A

A

| | | | | | | | | | |
|-------------|----------------|--------|------|---------------------------------------|-----------------------|-----------|--|---|--|
| mat'l code | | NOTE 2 | | tolerances unless otherwise specified | | CUSTOMER | | | |
| ltr | ecn no. | dr | date | linear | .XX±.01/.X±.3 | COPY | | www.fciconnect.com | |
| G | | | | projection | .XXX±.005/.X±.13 | INCH/MM | | title 3ACP + 4P + 24S + 6P RIGHT ANGLE SOLDER HEADER | |
| | | | | angles | .XXX±.0020/.XXX±.051 | INCH/MM | | product family PwrBlade code 213 | |
| | | | | dr | 0°±2° | scale 1:1 | | size A 51792 sheet 3 of 5 | |
| | | | | enrg | E. KORFF 05-05-00 | | | | |
| | | | | chr | J. BROWN TODAY'S DATE | | | | |
| | | | | appd | J. BROWN 05-05-00 | | | | |
| sheet index | revision sheet | | | | | | | | |

B

B

1 | 2

Pro/E

PDM: Rev:G

STATUS: Released

Printed: Sep 21, 2008

cage code 2856

4

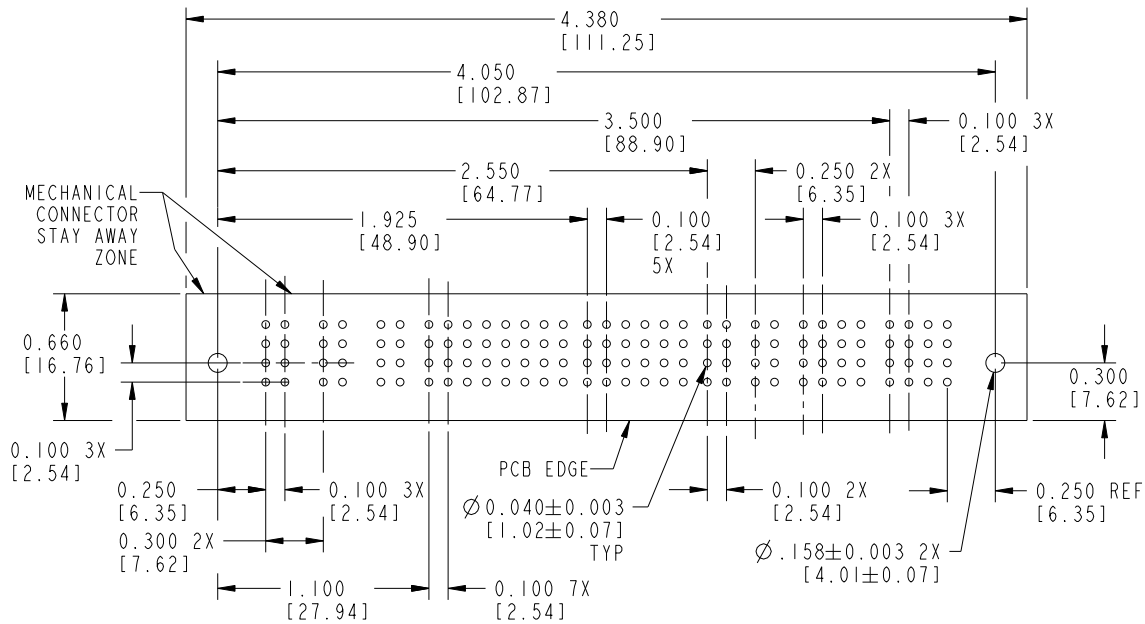
Tous droits strictement réservés. Reproduction ou communication a des tiers interdite sous quelque forme que ce soit sans autorisation écrite du propriétaire. Propriété de c FCI. Droits de reproduction FCI.



All rights strictly reserved. Reproduction or issue to third parties in any form whatever is not permitted without written authority from the proprietor. Property of FCI. Copyright FCI.

PRODUCT NUMBER

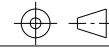
51792-001--
NOTE: ③



| | | | | | | | | | |
|-------------|----------------|--------|------|---------------------------------------|--|------------|--|---|--|
| mat'l code | | NOTE 2 | | tolerances unless otherwise specified | | CUSTOMER | | FCI | |
| lfr | ecn no. | dr | date | linear | .XX±.01/0.X±0.3 | COPY | | www.fciconnect.com | |
| G | | | | angles | .XXX±.005/0.XX±0.13 .XXX±.0020/0.XXX±.051 | projection | | title 3ACP + 4P + 24S + 6P RIGHT ANGLE SOLDER HEADER | |
| | | | | dr | 0°±2° | INCH/MM | | product family PwrBlade code 213 | |
| | | | | enr | E. KORFF 05-05-00 | scale | | size A 51792 sheet 4 of 5 | |
| | | | | chr | J. BROWN TODAY'S DATE | 1:1 | | | |
| | | | | appd | J. BROWN 05-05-00 | | | | |
| sheet index | revision sheet | | | | | | | | |



projection



INCH/MM

scale

1:1

product family PwrBlade code 213

size A 51792 sheet 4 of 5

1 | 2

3

4

A

A

B

B

1 | 2

Pro/E

PDM: Rev:G

STATUS: Released

Printed: Sep 21, 2008

cage code 22526

4

PRODUCT NUMBER
 51792-001--
 NOTE: ③

NOTES:

1. DIMENSIONS AND TOLERANCES ARE IN ACCORDANCE WITH ASME Y14.5M, 1994 UNLESS OTHERWISE SPECIFIED.

CONNECTOR NOTES:

2. HOUSING MATERIAL: UL 94 V-0 GLASS FILLED HIGH-TEMP THERMOPLASTIC
 POWER CONTACT MATERIAL: COPPER ALLOY
 SIGNAL PIN MATERIAL: COPPER ALLOY

⚠ 3. SEE ITEM 1 & 2 IN PRINT 10064183 FOR PLATING SPEC OF 51792-001 AND 51792-001LF RESPECTIVELY.

4. MANUFACTURER'S NAME, P/N, AND DATE CODE TO APPEAR ON THIS SURFACE.

5. PRODUCT SPECIFICATION GS-12-149.
 APPLICATION SPECIFICATION BUS-20-067.

PCB NOTES:

6. ALL HOLE DIAMETERS ARE FINISHED HOLE SIZE.

7. MOUNTING HOLES, WHERE APPLICABLE, ARE UNPLATED.

8. $\varnothing .0453 \pm 0.0010$ [1.151 \pm 0.025] DRILLED HOLES PLATED WITH
 .0003 [0.008] MIN SnPb OVER .001 [0.03]
 TO .003 [0.08] Cu PLATING TO ACHIEVE
 $\varnothing .040 \pm .003$ [1.02 \pm .07] HOLE.

9. "DIM XXX" TO BE DETERMINED BY THE CUSTOMER.

10. CONNECTOR KEEP-OUT ZONE.

11. ⚠ SYMBOL WILL BE NEXT TO ANY DIMENSION, VIEW, OR NOTE WHICH HAS BEEN MODIFIED WITH THE CURRENT DRAWING REVISION.

| | | | | | | | | | | |
|-------------|----------------|--------|------|---------------------------------------|-----------------------|--------------|------------|-----|----------------------------------|--|
| mat'l code | | NOTE 2 | | tolerances unless otherwise specified | | CUSTOMER | | FCJ | | |
| ltr | ecn no. | dr | date | linear | .XX±.01/0.X±0.3 | | COPY | | www.fciconnect.com | |
| G | | | | | .XXX±.005/0.XX±0.13 | | projection | | title 3ACP + 4P + 24S + 6P | |
| | | | | | .XXX±.0020/0.XXX±.051 | | | | RIGHT ANGLE SOLDER HEADER | |
| | | | | angles | 0°±2° | | INCH/MM | | product family PwrBlade code 213 | |
| | | | | dr | E. KORFF | 05-05-00 | scale | | size A 51792 sheet 5 of 5 | |
| | | | | engr | J. BROWN | TODAY'S DATE | 1:1 | | | |
| | | | | chr | J. BROWN | 05-05-00 | | | | |
| | | | | appd | J. BROWN | 05-05-00 | | | | |
| sheet index | revision sheet | | | | | | | | | |

Tous droits strictement réservés. Reproduction ou communication a des tiers interdite sous quelque forme que ce soit sans autorisation écrite du propriétaire. Propriété de c FCI. Droits de reproduction FCI.



All rights strictly reserved. Reproduction or issue to third parties in any form whatever is not permitted without written authority from the proprietor. Property of FCI. Copyright FCI.